

Set-up iPad mini 7 casing Ex d

2024-01-Ex-Ipad M7-DOC-050



Atexxo Manufacturing

Date	Revision	Details	Approved by
28-10-2024	A	Initial release	Dak/DvT

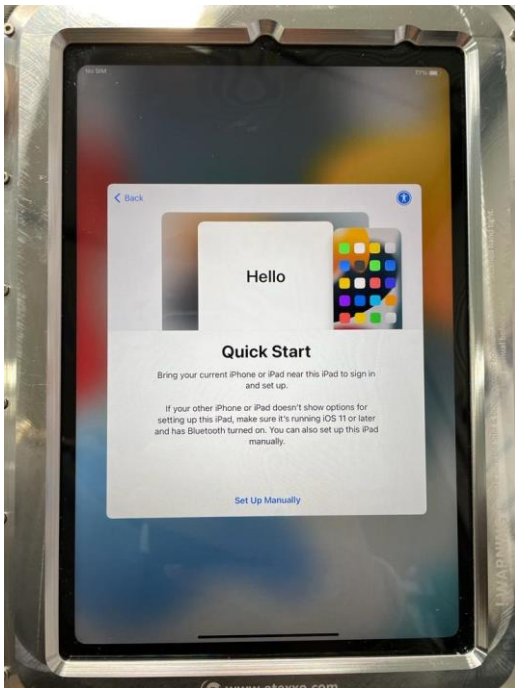
Introduction

The Apple iPad mini 7 is equipped with Touch ID via the on/off button. This feature cannot be used in combination with the protection method applied (Zone 1 / 21 and Zone 2 / 22 devices).

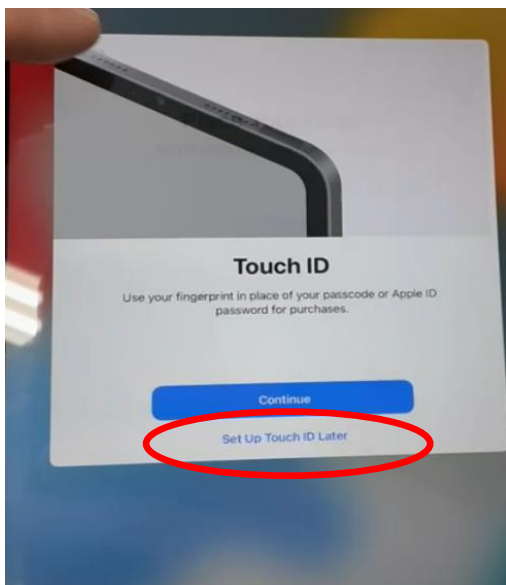
It sometimes occurs that during set-up of the Zone 1 / 21 device, touch ID is activated and needs to be bypassed. This document explains how this needs to be done.

Bypassing Touch ID

Start-up the iPad mini 7 and follow the installation steps (set up language, wifi etc.).

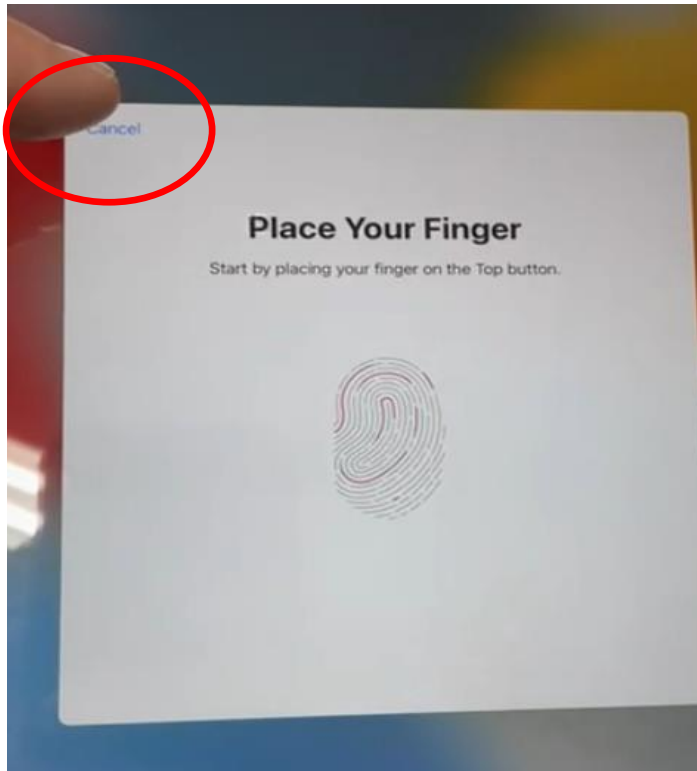


If all goes well, you can simply press on **'Set up Touch ID later'** as reflected in below image and press on **'Don't use'** in the next step in the installation:

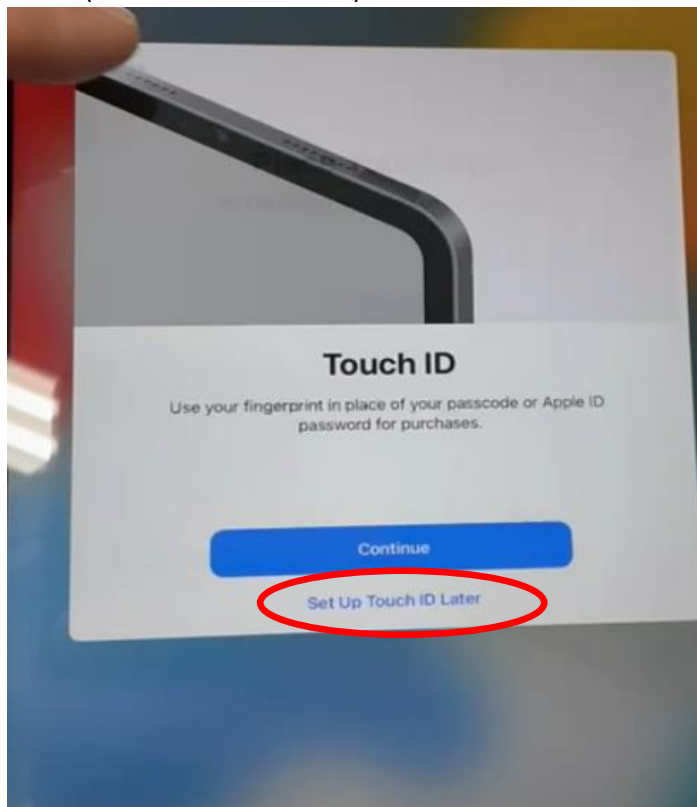


If you don't see this option or it switches immediately to the Touch ID installation the following needs to be done.

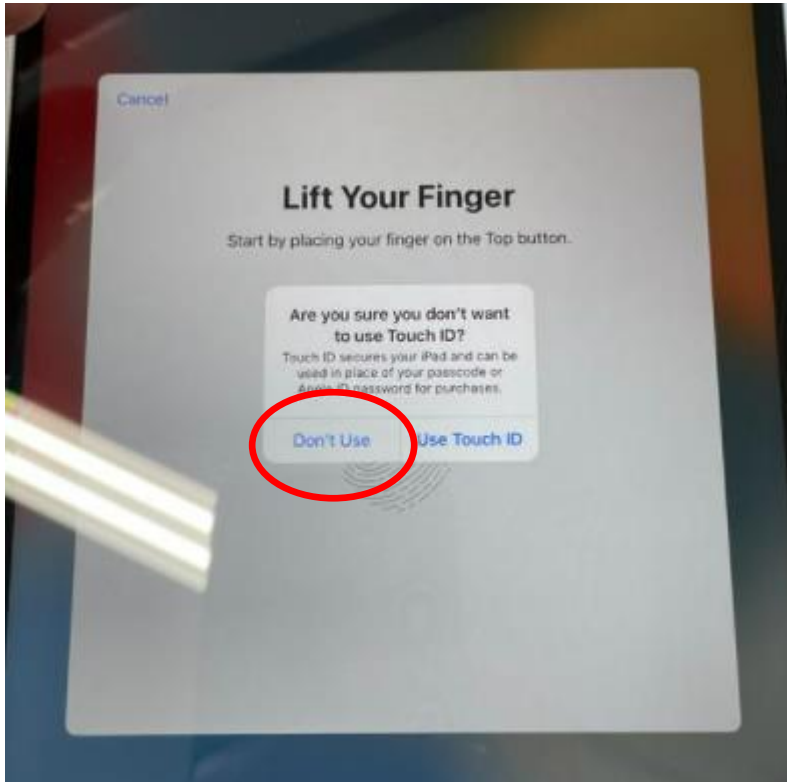
1. With one finger, click on **'Cancel'**



2. The set-up will very quickly show the screen below and will start with the Touch ID installation again. So when below screen appears, **very quickly** press on **'Set Up Touch ID Later'** (use 2 hands to do this).



3. After pressing **'Set Up Touch ID Later'**, you will see the following screen:



Press **'Don't Use'** and the device will continue its normal set-up.