

Manual iPhone 15 casing Ex d

2023-03-Ex-Iphone 15-DOC-009



Atexxo Manufacturing

Date	Revision	Details	Approved by
21-04-2023	A	Issued for certification	DAk/DvT
13-11-2024	B	Updated after certification	Dak/DvT
20-12-2024	C	Updated special conditions	Dak/DvT



Atexxo Manufacturing



USER- INSTALLATION INSTRUCTIONS AND SPECIAL CONDITIONS FOR

IPHONE 15 EX-D

Read this document and all documents that are referred to before operation, start-up or testing of the device.

The documents contain important safety instructions.

USER- INSTALLATION INSTRUCTIONS AND SPECIAL CONDITIONS FOR IPHONE 15 EX-D

Read this document and all documents that are referred to before operation, start-up or testing of the device.

The documents contain important safety instructions.



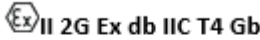
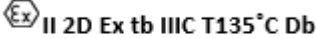
Reference documents:

1. Various User's - and installation manuals (ref. Apple Inc)
2. Declaration of Conformity

Device Consisting Of: iPhone 15 in flameproof (Ex d) enclosure and with the following marking:

! WARNING !

No electrical connections to the equipment are permitted in hazardous areas.
The equipment must never be opened or dismantled.
READ THE MANUAL BEFORE USE

 2813	Model: MOB-EXd-IPH-15
 Atexxo Manufacturing	 
Atexxo B.V. Einsteinstraat 13 3281NJ Numansdorp The Netherlands	Tamb: -20°C to +50°C Year: 2024
	ATEX: EPS 24 ATEX 1 207 X IECEX: IECEX EPS 24.0072 X
Serial: AT24XXXX	

The special instructions for safe use, described in this document must be carefully adhered to:



Read the user manual provided by Apple, before using the device.



No electrical connections to the equipment are permitted in hazardous areas.

Do not connect / recharge the equipment unless the area is known to be non-hazardous! (earplugs, battery charger)



The equipment must never be opened dismantled or modified.

The equipment does not contain any serviceable parts, and must be replaced completely at the end of its technical life or when damaged.



Handle the equipment carefully and with diligence.



The equipment shall be protected against impacts, excessive UV light and against high electrostatic charge generating processes.



Do not hold the equipment under water or leave outside in the rain.



Before entering the hazardous area, the equipment shall be checked on damage and proper functioning. Damaged or defective equipment shall be taken out of the hazardous area immediately!



Rubber bumpers must be installed on all four corners at all times, and must be visually inspected for good condition.



The bottom cover and fastener of the bottom cover shall be in place and hand tight fastened before entering the hazardous area.



The simcard cover and the bolts of the simcard cover shall be in place and hand tight fastened before entering the hazardous area.



Only use the original charge cable which is supplied with the device

Special conditions of use



Ambient temperature range is $-20^{\circ}\text{C} \leq T_a \leq +50^{\circ}\text{C}$.



A repair of flameproof joints is not allowed according to IEC 60079-1 values.



The minimum property class of screws must be A4-70. Only original parts from manufacturer shall be used.



The glass windows (front and camera) must be protected from high impact energy $> 2\text{J}$.



Device shall not be opened in hazardous location. Battery charging and sim card installation is only allowed outside hazardous location.



Additional accessory EX-ATEXXO-STRAP can be used only as original part from manufacturer

Sim-Card installation

Simcard installation is only allowed outside the hazardous area

1. Remove the 2pcs M3 bolts of the simcard cover (1) with the allen key 2mm from the toolbag (A)
2. Remove the simcard cover from the casing. M2 bolt from the toolbag can be used (B)
3. Remove the simcard slot from the iPad, using the tools provided by Apple (C) and Atexxo (D). See pictures and handling description on the following page.
4. Install the simcard per user instruction of Apple and re-insert the simcard slot (see pictures and handling description on the following page)
5. Re-install the simcard cover in the casing and tighten the bolts hand tight with the 2mm allen key (A)



Charging of the device

Charging of the device is only allowed outside the hazardous area

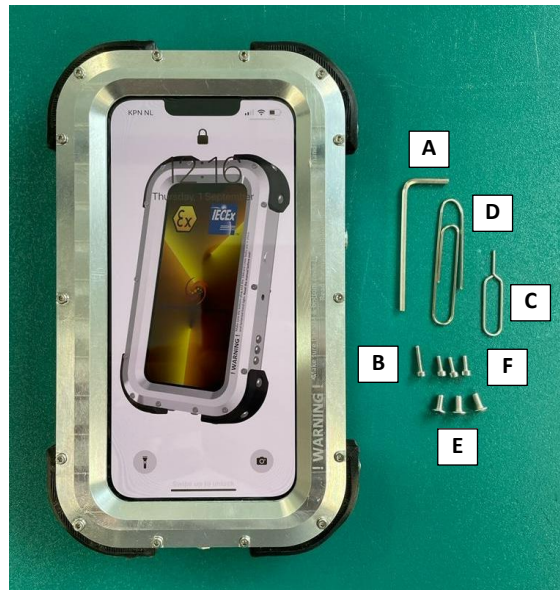
Via Apple Magsafe wireless charger or via USB-C cable:

1. Remove the bottom cover (2) by loosening the fastener (the bottom cover slides out but might require some guidance)
2. Gently remove the bottom cover (2)
3. **Do not disconnect the securing wire**
4. Connect the original USB-C cable provided by Apple
5. Check if the bottom cover is undamaged and that the thread of the fastener is OK
6. When charging is completed, remove the USB-C cable and re-instate the bottom cover and tighten the fastener hand tight with the 2mm allen key (A)

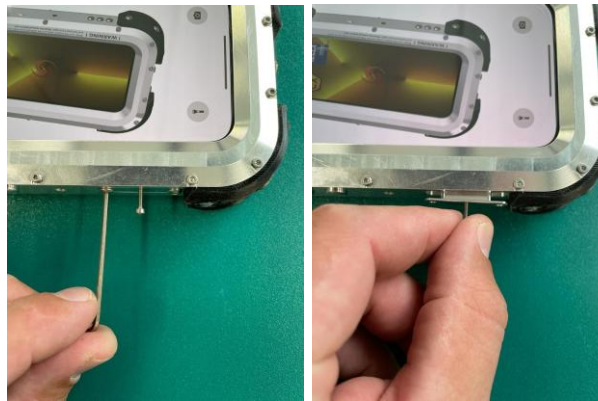
!! In case of damages, the equipment shall not be used in hazardous areas !!

In case of any doubt, do not take the equipment in a hazardous area and contact Atexxo Manufacturing immediately for further assistance.

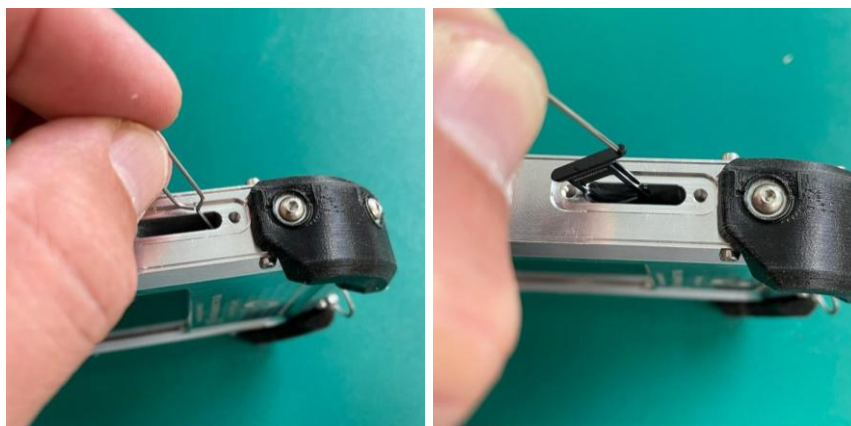
Sim-Card installation



1. Remove the 2pcs M3 bolts (A) and the simcard cover afterwards (B).



2. Use the Apple tool to unlock the simcard holder and use the paperclip (C) to remove it



3. Install the SIM card as per user instruction of Apple
4. Re-install the simcard holder with simcard correctly with the paperclip (C)
5. Re-install the simcard cover in the casing and tighten the bolts (hand tight) with the allen key (A)