



Atexxo Manufacturing



USER- INSTALLATION INSTRUCTIONS AND SPECIAL CONDITIONS FOR

IPHONE 13 EX-D

Read this document and all documents that are referred to before operation, start-up or testing of the device.

The documents contain important safety instructions.

USER- INSTALLATION INSTRUCTIONS AND SPECIAL CONDITIONS FOR IPHONE 13 EX-D

Read this document and all documents that are referred to before operation, start-up or testing of the device.

The documents contain important safety instructions.

Reference documents:

1. Various User's - and installation manuals (ref. Apple Inc)
2. Declaration of Conformity

Device Consisting Of: iPhone 13 in flameproof (Ex d) enclosure and with the following marking:

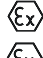
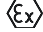
! WARNING !

No electrical connections to the equipment
are permitted in hazardous areas.
The equipment must never be opened or dismantled.



Atexxo B.V.
Einsteinstraat 13
3281NJ Numansdorp
The Netherlands

Model: **MOB-EXd-IPH-13**

CE  II 2G Ex db IIC T4 Gb
2813  II 2D Ex tb IIIC T135°C Db

Tamb: **-20°C to +50°C**

Year: **2023**

Serial: **AT23XXXX**

ATEX: **EPS 22 ATEX 1 265 X**

IECEx: **IECEx EPS 22.0057 X**

The special instructions for safe use, described in this document must be carefully adhered to:



Read the user manual provided by Apple, before using the device.



No electrical connections to the equipment are permitted in hazardous areas.

Do not connect / recharge the equipment unless the area is known to be non-hazardous! (earplugs, battery charger)



The equipment must never be opened dismantled or modified.

The equipment does not contain any serviceable parts, and must be replaced completely at the end of its technical life or when damaged.



Handle the equipment carefully and with diligence.



The equipment shall be protected against impacts and excessive UV light.



Do not hold the equipment under water or leave outside in the rain.



Before entering the hazardous area, the equipment shall be checked on damage and proper functioning. Damaged or defective equipment shall be taken out of the hazardous area immediately!



Rubber bumpers must be installed on all four corners at all times, and must be visually inspected for good condition.



The bottom cover and the bolts of the bottom cover shall be in place and hand tight fastened before entering the hazardous area.



The simcard cover and the bolts of the simcard cover shall be in place and hand tight fastened before entering the hazardous area.



Only use the original charge cable which is supplied with the device

Specific conditions of use



Ambient temperature range is $-20^{\circ}\text{C} \leq T_a \leq +50^{\circ}\text{C}$.



A repair of flameproof joints is not allowed according to IEC 60079-1 values.



The minimum property class of screws must be A4-70. Only original parts from manufacturer shall be used.



The glass window must be protected from high impact energy $> 2\text{J}$.



Device shall not be opened in hazardous location. Battery charging is only allowed outside hazardous location.

Sim-Card installation

Simcard installation is only allowed outside the hazardous area

1. Remove the 2pcs M3 bolts of the simcard cover (1) with the allen key 2mm from the toolbag (A)
2. Remove the simcard cover from the casing. M2 bolt from the toolbag can be used (B)
3. Remove the simcard slot from the iPad, using the tools provided by Apple (C) and Atexxo (D). See pictures and handling description on the following page.
4. Install the simcard per user instruction of Apple and re-insert the simcard slot (see pictures and handling description on the following page)
5. Re-install the simcard cover in the casing and tighten the bolts hand tight with the 2mm allen key (A)



Charging of the device

Charging of the device is only allowed outside the hazardous area

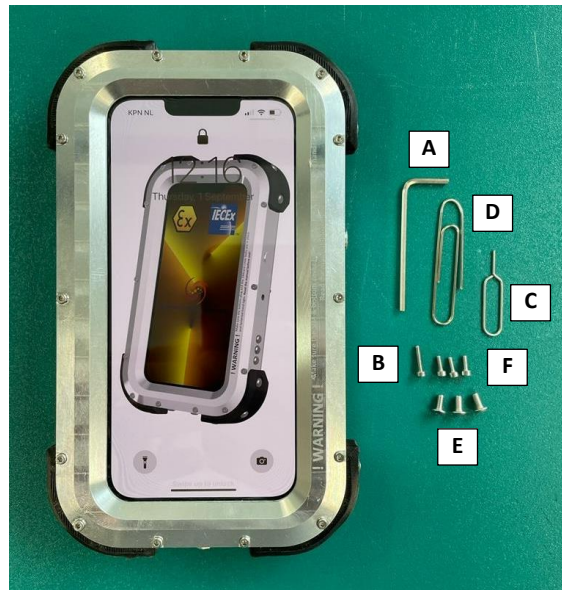
Via lightning jack:

1. Remove the bolt of the bottom cover (2) with the 2mm allen key from the toolbag (A)
2. Gently remove the bottom cover (2)
3. **Do not disconnect the securing wire**
4. Connect the lightning cable provided by Apple
5. Check if the bottom cover is undamaged and that the thread of the bolts is OK
6. When charging is completed, remove the lightning cable and re-instate the bottom cover and tighten the bolt hand tight with the 2mm allen key (A)

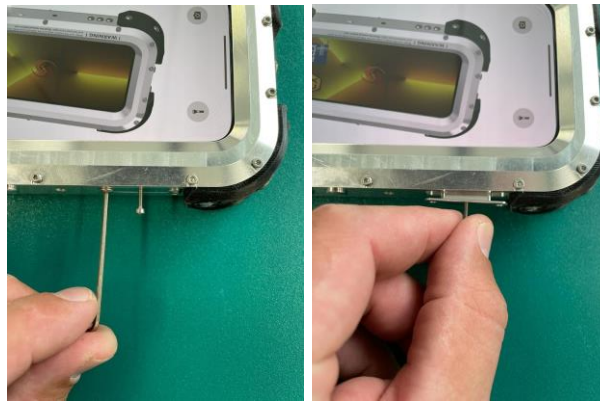
!! In case of damages, the equipment shall not be used in hazardous areas !!

In case of any doubt, do not take the equipment in a hazardous area and contact Atexxo Manufacturing immediately for further assistance.

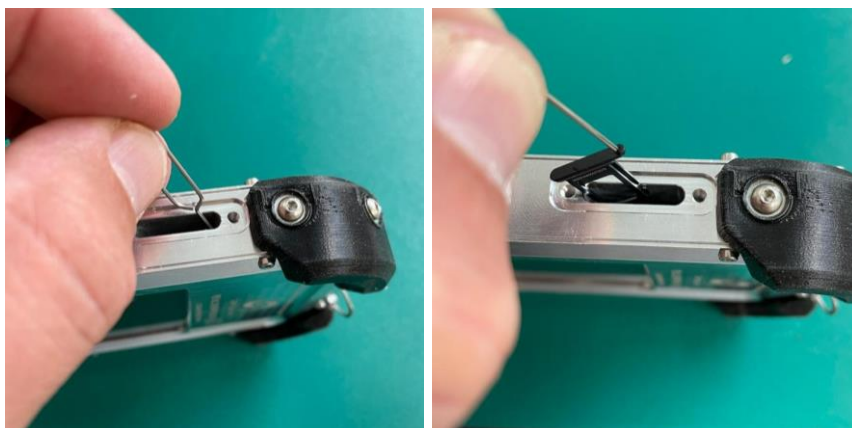
Sim-Card installation



1. Remove the 2pcs M3 bolts (A) and the simcard cover afterwards (B).



2. Use the Apple tool to unlock the simcard holder and use the paperclip (C) to remove it



3. Install the SIM card as per user instruction of Apple

4. Re-install the simcard holder with simcard correctly with the paperclip (C)

5. Re-install the simcard cover in the casing and tighten the bolts (hand tight) with the allen key (A)